



How to mark your ballot using Verity Touch Writer

Use one of the following tools:

Move wheel and Select button



Tactile switches (or your sip-and-puff)



Touch screen

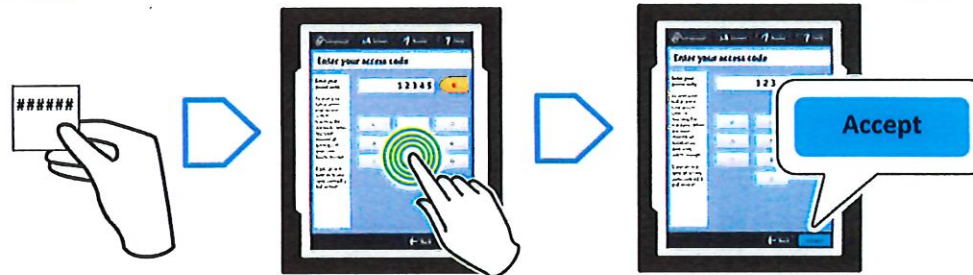


Note: If you want to listen to instructions and ballot choices, use headphones or a neckloop.

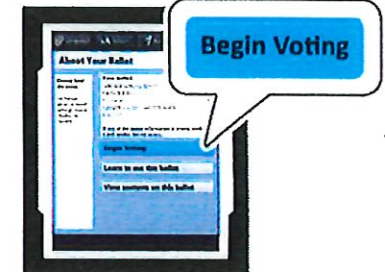
1 If multiple languages are available, select one.



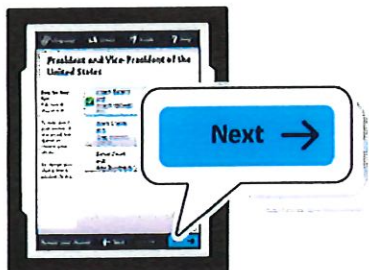
2 Enter your access code and select **Accept**.



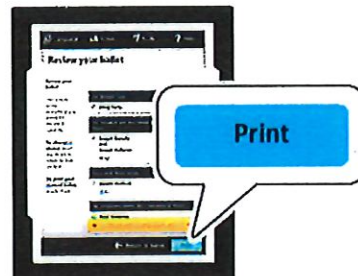
3 When you're ready, select **Begin Voting**.



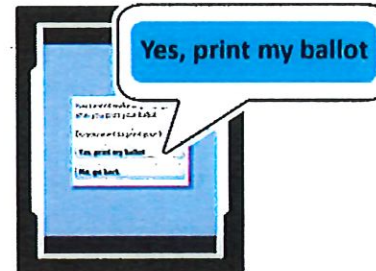
4 Select each choice; then select **Next** to move to the next contest.



5 Review your ballot. When you're ready, select **Print**.



6 Select **Yes, print my ballot**.



7 Retrieve your ballot from the printer.

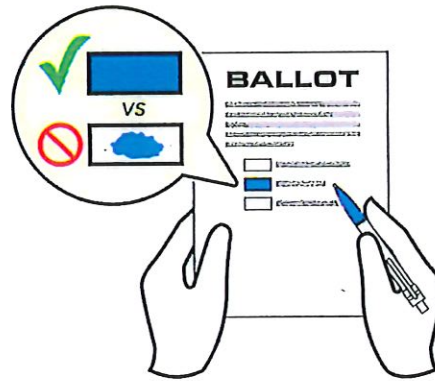


How to cast your ballot using Verity Scan



1

Mark your ballot in blue or black ink, *completely filling* the box next to each choice.*



* Alternatively, ask a poll worker for a ballot-marking device.

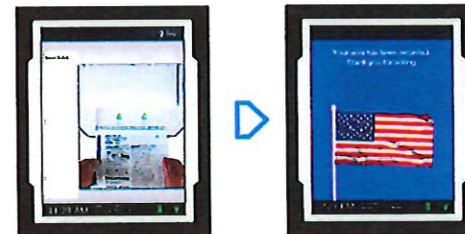
2

Review your ballot carefully to confirm your selections.



3

Cast your ballot by inserting it in the scanner.



A waving American flag appears, indicating success!